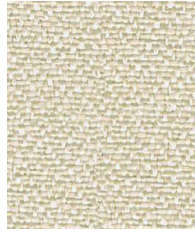




Adobo
YB165



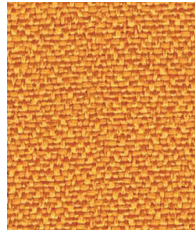
Oyster
YB107



Rum
YB086



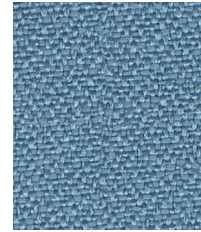
Aruba
YB093



Solano
YB088



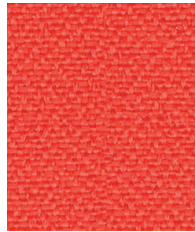
Tequila
YB038



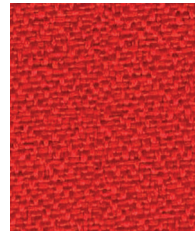
Steel
YB095



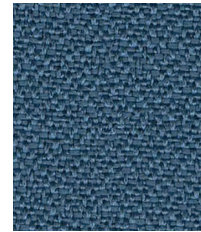
Sandstorm
YB302



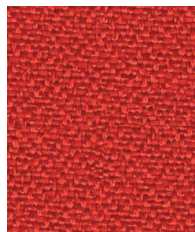
Tortuga
YB168



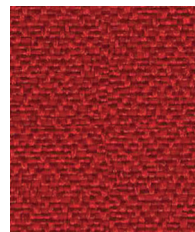
Belize
YB105



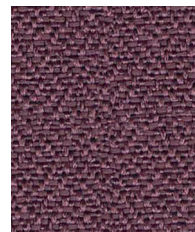
Martinique
YB004



Lobster
YB087



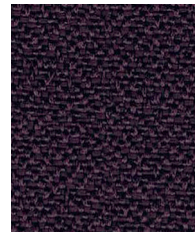
Calypso
YB106



Bridgetown
YB102



Sombrero
YB046

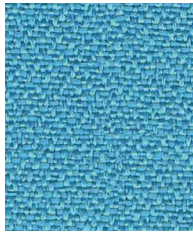


Tarot
YB090

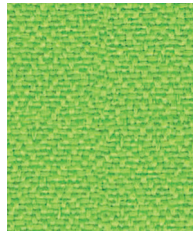


Costa
YB026

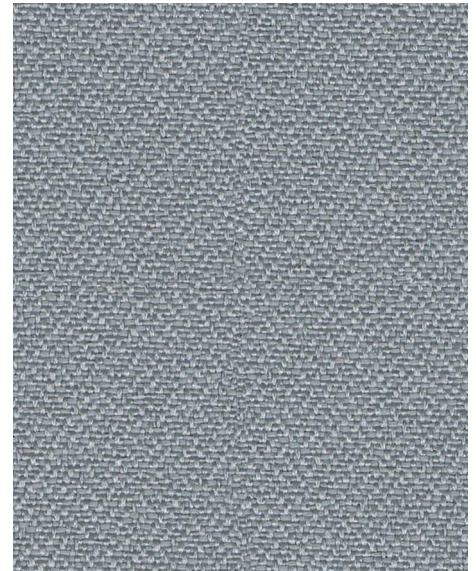
Photographic fabric scans are not colour accurate. Always request actual fabric samples before ordering.



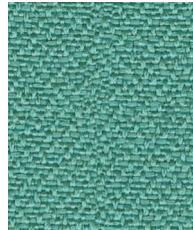
Marianna
YB157



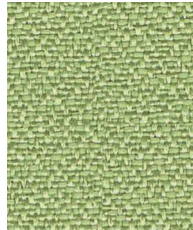
Madura
YB156



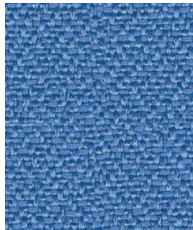
Slip
YB094



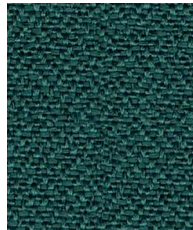
Campeche
YB301



Apple
YB096



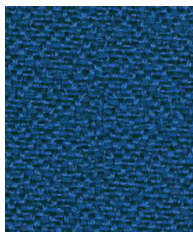
Bluebell
YB097



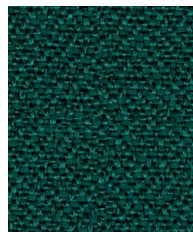
Windjammer
YB047



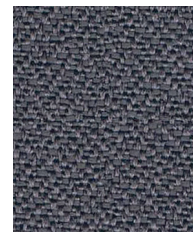
Buru
YB170



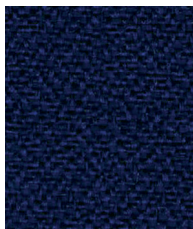
Scuba
YB089



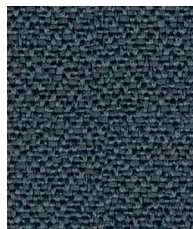
Montserrat
YB011



Blizzard
YB108



Ocean
YB100



Paseo
YB019



Havana
YB009



Panels



Acoustic



Environmental



Year guarantee

Lucia is an ever popular crêpe weave synthetic panel fabric. It's manufactured from 100% recycled polyester saving virgin raw materials and giving a reduced environmental footprint. With a non-lustrous appearance, its bold and bright colour palette is designed to complement the Xtreme range for upholstery.

This fabric is largely acoustically transparent and as such is ideal to be used as a decorative facing for sound-absorbing boards.



Technical information

UK

Composition

100% Post Consumer Recycled Polyester
Non metallic dyestuffs

Environment

Certified to the EU Ecolabel
Certified to OEKO-TEX® Standard 100
Made from 100% post-consumer recycled polyester

Width

170 cm minimum

Weight

260 g/m² ±5% (442 g/lin.m ±5%)

Flammability

EN 1021 - 1 (cigarette)
EN 1021 - 2 (match)
BS 7176 Low Hazard
BS 476 Part 7 Class 1 (Adhered)
EN 13501-1 Adhered class B, s1, d0
EN 13501-1 Un-adhered class B, s1,d2
Note: Flammability performance is dependent on components used. Our certificates show what substrates have been used in our tests. For composite tests customers must ensure their complete furniture meets the necessary standards.

Light Fastness

6 (ISO 105 - B02)

Fastness to Rubbing

Wet: 4, Dry: 4 (ISO 105 - X12)

Acoustic Properties

Acoustically transparent, Acoustic graphs available upon request

Cleaning

Vacuum regularly. Wipe clean with a damp cloth or shampoo using proprietary upholstery shampoo.

Please note that seam performance is dependent on seam construction and needle and thread type. We recommend that appropriate sewing advice be taken.

Batch to batch variations in shade may occur within commercial tolerances. We reserve the right to alter technical specifications without notice. The Unregistered Design Rights and the Copyright in all designs are the exclusive property of Camira Fabrics Limited.

D

Zusammensetzung

100% Prozent aus post-consumer Polyester
Nicht schwermetallhaltige Farbstoffe

Umweltfreundlich

Nach Zertifikat EU Ecolabel
Nach Zertifikat OEKO-TEX® Standard 100
Hergestellt aus 100% Prozent aus post-consumer Polyester

Breite

170 cm nutzbare Breite

Gewicht

260 g/m² ±5% (442 g/lf.d.m ±5%)

Feuersicherung

EN 1021 - 1 (Zigarettentest)
EN 1021 - 2 (Streichholztest)
BS 7176 Low Hazard
BS 476 Part 7 Class 1 (Adhered)
EN 13501-1 Adhered class B, s1, d0
EN 13501-1 Un-adhered class B, s1,d2
Bemerkung: Die Schwerentflammbarkeit hängt von den verwendeten Komponenten ab. Unsere Zertifikate zeigen auf, welche Substrate bei den Tests verwendet wurden. Bei Verbundtests muss sichergestellt sein, daß das komplette Möbel den entsprechenden Standards entspricht.

Lichtechtheit

6 (ISO 105 - B02)

Reibechtheit

Nass: 4, Trocken: 4 (ISO 105 - X12)

Akustische Eigenschaften

Akustisch durchlässig, Akustische Messwerte auf Anfrage

Reinigung

Regelmässig staubsaugen. Dazu mit einem feuchten Tuch abwischen, oder mit einem speziellen Polsterschaum behandeln.

Eine optimale Nahtausreissfestigkeit hängt von der Nähfahne, der verwendeten Nadel und dem Näh-Garn ab. Wir empfehlen daher Nähversuche durchzuführen.
Handelsübliche Farbabweichungen können auftreten und berechtigen nicht zur Reklamation. Wir behalten uns die Änderung technischer Spezifikationen vor. Die registrierten und nicht registrierten Urheberrechte der Dessinierungen sind ausschliessliches Eigentum der Camira Fabrics Limited.

F

Composition

Fabriqué en polyester recyclé à 100%
Teintures non métalliques

Écologique

Avec le certificat EU Ecolabel
Certifié à OEKO-TEX® Standard 100
Fabriqué en polyester recyclé à 100% après consommation

Largeur

170 cm minimum

Poids

260 g/m² ±5% (442 g/m.l ±5%)

Flammabilité

EN 1021 - 1 (cigarette)
EN 1021 - 2 (allumette)
BS 7176 Low Hazard
BS 476 Part 7 Class 1 (Adhered)
EN 13501-1 Adhered class B, s1, d0
EN 13501-1 Un-adhered class B, s1,d2
Notez: La performance de flammabilité dépend des composantes utilisées. Nos certificats indiquent les substrats utilisés dans nos tests. Pour les tests composites, les clients doivent s'assurer que leurs meubles complets satisfont aux normes nécessaires.

Solidité à la lumière

6 (ISO 105 - B02)

Solidité au Frottement

Mouillé: 4, Sec: 4 (ISO 105 - X12)

Propriétés Acoustiques

Acoustiquement transparent, graphiques acoustiques disponibles sur demande

Nettoyage

Aspirer régulièrement. Essuyer avec une étoffe humide ou nettoyer à l'aide d'un produit approprié pour tissus d'ameublement.

Veillez noter que la performance du joint dépend de sa construction ainsi que de l'aiguille et du type de fil utilisés.
Une variation de couleurs peut provenir (commerciallement tolérable). Nous réservons le droit de changer les spécifications techniques sans préavis. Les Droits de Conception non-enregistrés et les droits d'auteur de tous les motifs sont la propriété exclusive de Camira Fabrics Limited.

ES

Composición

Producido con poliéster 100% reciclado
Tintes no metálicos

Ambiental

Certificado con EU Ecolabel
Certificado de OEKO-TEX® Standard 100
Producido con poliéster 100% reciclado tras ser consumido

Ancho

170 cm mínimo

Peso

260 g/m² ±5% (442 g/lin.m ±5%)

Inflamabilidad

EN 1021 - 1 (cigarillo)
EN 1021 - 2 (cerilla)
BS 7176 Low Hazard
BS 476 Part 7 Class 1 (Adhered)
EN 13501-1 Adhered class B, s1, d0
EN 13501-1 Un-adhered class B, s1,d2
Nota: El rendimiento de la inflamabilidad depende de los componentes usados. Nuestros certificados muestran qué substratos se han usado en nuestros tests. Para tests compuestos nuestros clientes deben asegurar si sus muebles cumplen la normativa al uso.

Solidez a la luz

6 (ISO 105 - B02)

Solidez al rozamiento

Húmedo: 4, Seco: 4 (ISO 105 - X12)

Acústico Propiedades

Acústicamente transparente, gráficos disponibles bajo petición

Limpieza

Limpiar con aspiradora frecuentemente. Bien lavar con un paño húmedo o con un champú apropiado para tapicería.

Tenga en cuenta que el rendimiento de la costura depende de la construcción de la costura, además de la aguja y del tipo de rosca. Le recomendamos que se aconsejen para coser la costura.
Las variaciones de lote a lote en la sombra se puede producir dentro de tolerancias comerciales. Nos reservamos el derecho a efectuar modificaciones técnicas sin previo aviso. Los derechos sobre los diseños no registrados y los derechos de autor en todos los diseños son propiedad exclusiva de Camira Fabrics Limited.